

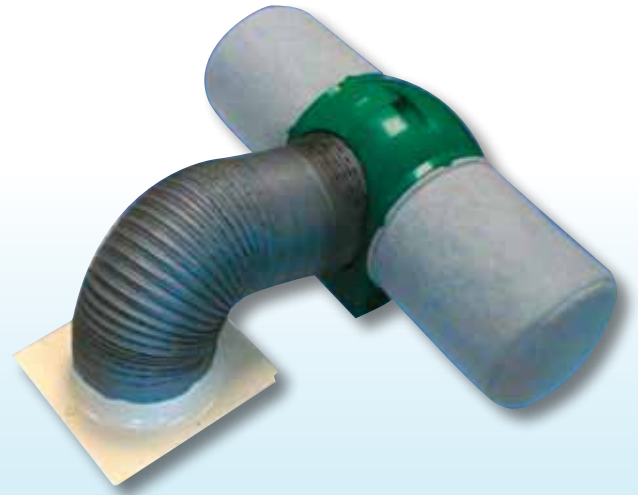
# Drimaster 2000

## User Guide for Occupant

Using the positive input ventilation principle Drimaster 2000 gently supplies tempered filtered air into your home creating a healthy environment.

### How will the unit benefit you?

- The unit automatically ventilates your home
- Takes advantage of free solar gain from your loft
- Re-uses otherwise lost heat from your home that passes through the loft insulation
- Significantly improves indoor air quality
- Prevents condensation forming in your property
- Reduces house dust mite populations, helping asthma and allergy sufferers



- Visible sensor for filter and unit status
- Whisper quiet operation
- 5 year warranty

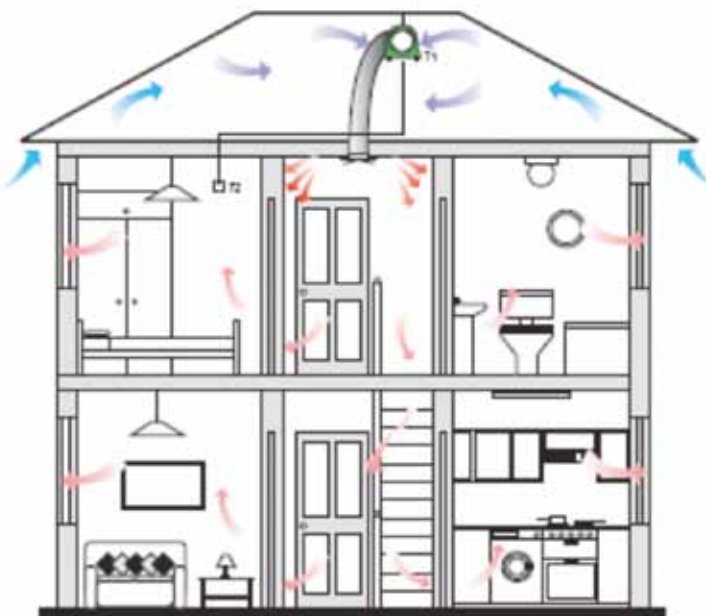
### How does it work?





Located in your loft space the Drimaster unit will continuously draw air from the loft space where it is slightly warmed/tempered by the heat that exists in all lofts.

This heat comes from solar gain combined with the heat that is conducted through the ceiling of the home. As the air passes through the diffuser it recirculates the lost heat that gathers at ceiling level.

Stale, contaminated vapour laden air in the home is continuously diluted and displaced through the leakage points that are found in all houses. This is replaced with fresh, filtered, tempered air creating a healthier environment for the occupants.

The Drimaster 2000 has a unique patented sensor. Four way intelligent heat recovery monitors the temperature in the loft and in the house. These sensors optimise energy performance accordingly i.e. if the loft temperature is higher than the house temperature the fan speeds up 1 setting into heat recovery mode



- Cold Incoming Air 
- Tempered Air 
- Reclaimed Air 
- Warm Circulated Air 

**Q. How much does it cost to run?**

- A. When you consider the advantages the unit will provide for you, the running costs are insignificant.

Typically the electrical consumption will be about 1p a day. However it should be remembered that the unit is making use of heat at ceiling level that would otherwise be lost. The unit will switch itself off when temperatures are such that condensation would not occur within your house e.g. in summertime.

**Q. What maintenance is required for the unit?**

- A. Very little. The only maintenance required is the replacement of the filters every 5 years.

**Q. How do I operate the unit?**

- A. The simple answer is you don't. The unit is designed to run automatically. As house sizes and occupancy levels vary your Drimaster is provided with 6 speed controls which can be adjusted to exactly suit your home. Your installer will select the appropriate speed control for your home.

**Q. How will I remember to have the filter replaced?**

- A. A flashing red light will appear on the remote sensor when the filters need replacing. In the unlikely event of a fault occurring a constant red light will illuminate.



Diffuser



Sensor

**Need more advice?**

Please contact your housing provider.

**Nuair tel: 029 2085 8200**  
or visit [www.nuair.co.uk/residential](http://www.nuair.co.uk/residential)