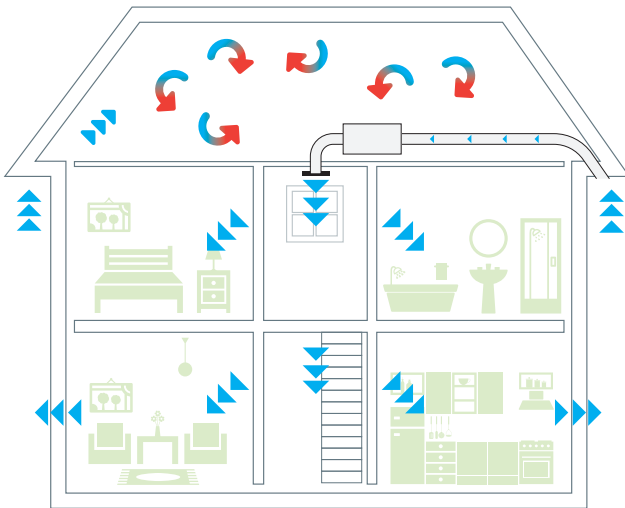


DRI-365

DRI-365 is a unique low-energy, loft mounted Positive Input Ventilation unit which provides whole home ventilation all year round. The unit is fully automatic and intelligently decides which location to supply the air from. It utilises the solar gain within the loft during the colder months subsequently bringing in fresh air during the warmer months.

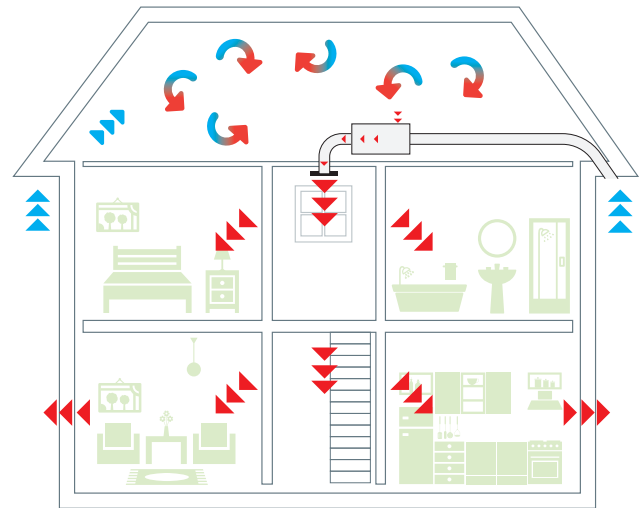


SUMMER



If the loft temperature is above 24°C air is drawn directly from outside, to provide background ventilation. In addition a boost switch is supplied to increase airflow when required.

WINTER

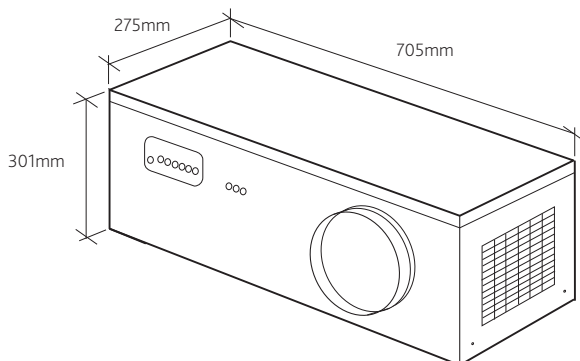


During the colder months tempered air is drawn from the loft space taking advantage of solar gain combined with the heat conducted through the ceiling of the home.

Technical

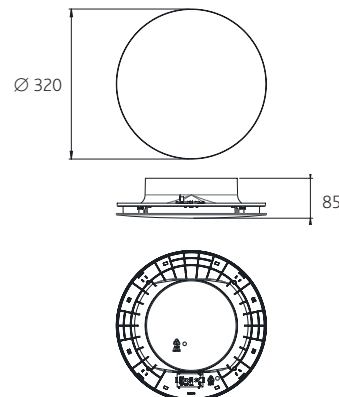
DIMENSIONS (mm) & UNIT WEIGHT

Weight - 10KG



DIFFUSER (mm)

Weight - 1KG



Electrical Details

	Voltage	Consumption
DRI-365	230V 1ph 50Hz	2W(min) 24W(max)

Typical Installation

Roof structure

- 1 AIR FROM OUTSIDE
- 2 150mm DIA. FLEXIBLE DUCTING
- 3 SETTING SWITCH IS LOCATED ON THE REAR OF THE FAN FACE
- 4 AIR FROM LOFT
- 5 DRI-365
- 6 200mm DIA. FLEXIBLE DUCTING
- 7 DIFFUSER

Unit mounted on roof joists using two "L" shape metal brackets and AV mounts supplied with unit.

A remote boost switch comes as standard with the DRI-365 model. This must be wired directly in to the unit and can be used to control the fan with the choice of "Normal" or "Boost" functionality.

For installation the choice of either a Soffit Kit or Wall Kit must be made and ordered separately to the DRI-365 unit.

Please note part codes are DRI365-SOFITKIT and DRI365-WALKIT.

ACCESSORIES



G4 FILTER



BOOST SWITCH

Consultants Specification

DRI-365

Nuaire DRI-365 ultra low energy Positive Input Ventilation unit.

The unit casing shall be manufactured from thermally lined pre-painted steel.

The casing shall have an easily removable panel to allow access for maintenance.

The unit shall incorporate a filter of G4 grade with an area of approximately 0.47m².

The unit shall incorporate a forward curved centrifugal impeller and high efficiency brushless DC motor fitted with sealed for life, self-lubricating bearings and locked rotor protection.

The unit shall be supplied with a purpose designed polymer diffuser for efficient, directable air input using side blanking pieces supplied.

The ducting between the unit and the diffuser is supplied with unit.

The unit shall incorporate 6 volume control settings for maximum flexibility and occupant comfort. The unit is fully automatic. If the loft temperature is below 24°C then the unit will draw fresh air from the loft. If the loft temperature is above 24°C then cool fresh air will be drawn from outside the dwelling.

The unit shall incorporate two air inlets, one draws air from the loft, the other from outside via a 150mm dia. spigot.

The unit can be boosted to obtain maximum ventilation by the operation of a boost switch (supplied).

An internal monitor shall record the unit's operational time. For information on reducing radon egress, it is suggested that the details given in Positive pressurisation: A BRE Guide to Radon Remedial Measures in Existing Dwellings may be considered.

The unit shall be offered with a 5 year warranty; 1 year parts and labour, remaining years parts only. This warranty is void if the equipment is modified without authorisation, is incorrectly applied, misused, disassembled or not installed, commissioned and maintained in accordance with the details contained in the I&M manual and general good practice.

DRIMASTER-ECO PIV Product Selector

Page No.	6	8	10	14	16	19
Feature	DRI-ECO-HC	DRI-ECO-LINK-HC	DRI-ECO-HEAT-HC	DRI-ECO-LC	DRI-ECO-3STOREY	DRI-365
For properties with lofts						
Integral heater						
Compatible with relative humidity sensor						
Compatible with CO ₂ sensor						
Compatible with remote two-way boost switch						
Compatible with four-way remote switch with boost and heater control						
Compatible with Remote Monitoring device						
Easy accessible discreet commissioning and controls behind diffuser						
Controls/commissioning at unit						
Modern circular ceiling diffuser						
Aluminium intumescent diffuser						
5-year warranty						
7-year warranty						

KEY: DRI Drimaster (loft-mounted) ECO Eco-friendly HC Hall control (diffuser) HEAT Integral heater
 LC Loft control/unit 3STOREY 3 storey properties 365 Operates 365 days a year



Nuaire offers other forms of residential ventilation!

Dedication to innovative technology due to the increased demand for energy efficient homes means Nuaire can offer everything from simple bathroom fans, through to combined heating and ventilation systems with acoustic solutions for every property type.

For more information contact our Residential Sales Office on

029 2085 8500

or residential.enquires@nuaire.co.uk

www.nuaire.co.uk

EXTRACT FANS

Continuous and Intermittent



MVHR

Mechanical Ventilation with Heat Recovery



dMEV

Decentralised Mechanical Extract Ventilation



FLATMASTER

Positive Input Ventilation for homes without lofts



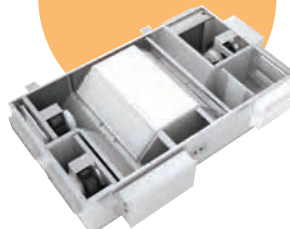
DRIMASTER-ECO

Positive Input Ventilation for homes with lofts



AIREPOD

MVHR



MEV

Mechanical Extract Ventilation

