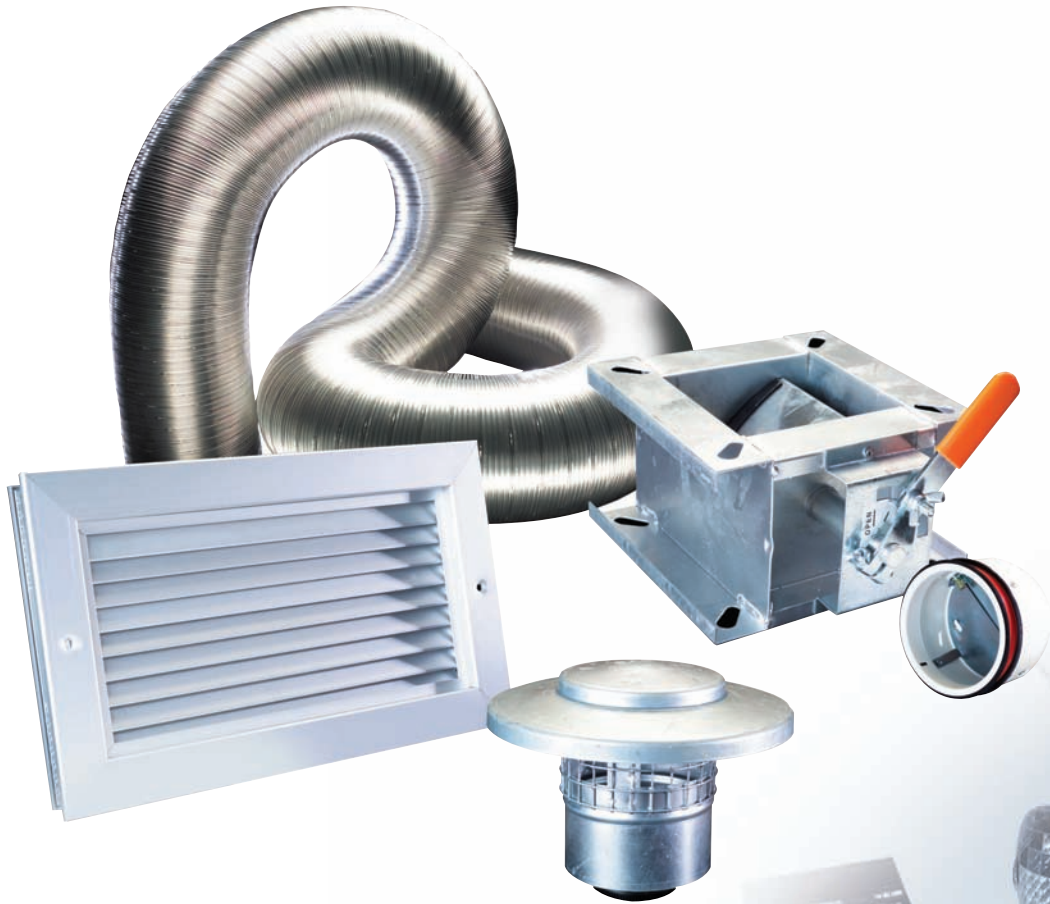


## ANCILLARIES

ALL YOUR REQUIREMENTS FROM A SINGLE SUPPLIER.



## BENEFITS

EXTRACT GRILLES  
DIFFUSERS  
LOUVRES  
VOLUME & CONTROL DAMPERS  
ACCESS DOORS  
AV MOUNTS  
COWLS & SHUTTERS

### WIDE RANGE OF SYSTEM BALANCING DAMPERS AND BACK DRAFT SHUTTERS

Have been designed to offer long life and effective control.

### A SELECTION OF ROOF TERMINALS

Provide the answer to weathering most roof penetration quickly and easily, manufactured in hard wearing GRP, Galvanised steel & Aluzinc.

### NEW LAY FLAT PVC DUCTING

Designed for restricted access application and ideal for 'flat' stocking on site.

For full range of ducting please refer to Residential catalogue.

### COMPREHENSIVE RANGE OF DUCTING, DUCT FITTINGS AND ACCESSORIES

Providing solutions for domestic and commercial installations.

### HUGE STOCKS HELD IN A PURPOSE BUILT WAREHOUSE

Ensure many items are available next day\*, contact Nuaire for details

\* subject to terms and conditions

### PURPOSE BUILT WAREHOUSE FACILITIES



## CONTROLS & ANCILLARIES

### GRILLES AND DIFFUSERS

#### TECHNICAL INFORMATION

#### GRILLES AND DIFFUSERS

##### INLET FILTERED GRILLE

Code	Description	Code	Description
100IG	100mm inlet grille c/w filter	50IG	50mm inlet grille c/w filter
100IG(WHITE)	100mm inlet grille c/w white filter		



##### DOUBLE DEFLECTION GRILLE (WHITE FINISH)

Code	Description	Code	Description
DD100WH/OBD	White grille 100 x 100mm	DD150WH	White grille 150 x 150mm
DD150WH/OBD	White grille 150 x 150mm, with opposed blade damper	DD200WH	White grille 200 x 200mm
DD200WH/OBD	White grille 200 x 200mm, with opposed blade damper	DD250WH	White grille 250 x 250mm
DD250WH/OBD	White grille 250 x 250mm, with opposed blade damper	DD300WH	White grille 300 x 300mm
DD300WH/OBD	White grille 300 x 300mm, with opposed blade damper	DD450WH	White grille 450 x 450 mm



##### SINGLE DEFLECTION GRILLE

Code	Description	Code	Description
SDG150	Satin anodised grille 150 x 150mm	SDG300	Satin anodised grille 300 x 300mm
SDG200	Satin anodised grille 200 x 200mm	SDG350	Satin anodised grille 350 x 350mm
SDG250	Satin anodised grille 250 x 250mm		



##### EGGCRATE GRILLE (WHITE FINISH)

Code	Description	Code	Description
EC100WH	White grille 100 x 100mm	EC100WH/OBD	White grille 100 x 100mm, with opposed blade damper
EC150WH	White grille 150 x 150mm	EC150WH/OBD	White grille 150 x 150, with opposed blade damper
EC200WH	White grille 200 x 200mm	EC200WH/OBD	White grille 200 x 200, with opposed blade damper
EC250WH	White grille 250 x 250mm	EC250WH/OBD	White grille 250 x 250, with opposed blade damper
EC300WH	White grille 300 x 300mm	EC300WH/OBD	White grille 300 x 300, with opposed blade damper
EC350WH	White grille 350 x 350mm	EC400WH/OBD	White grille 400 x 400mm, with opposed blade damper
EC400WH	White grille 400 x 400mm	EC450WH/OBD	White grille 450 x 450mm, with opposed blade damper
EC450WH	White grille 450 x 450mm	EC595WH/OBD	White grille 595 x 595mm, with opposed blade damper
EC595WH	White grille 595 x 595mm		



##### 4 WAY DIFFUSERS WITH OPTIONAL OPPOSED BLADE DAMPERS (WHITE & ANODISED)

Code	Description	Code	Description
FW150	4 wd painted white, 150 x 150mm	FW150WH/OBD	4 wd painted white, 150 x 150 c/w opposed blade damper
FW225	4 wd painted white, 225 x 225mm	FW225WH/OBD	4 wd painted white, 225 x 225 c/w opposed blade damper
FW300	4 wd painted white, 300 x 300mm	FW300WH/OBD	4 wd painted white, 300 x 300 c/w opposed blade damper
FW375	4 wd painted white, 375 x 375mm	FW375WH/OBD	4 wd painted white, 375 x 375 c/w opposed blade damper
FW450	4 wd painted white, 450 x 450mm	FW595WH/OBD	4 wd painted white, 595 x 595 c/w opposed blade damper
FW595	4 wd painted white, 595 x 595mm		



##### NON VISION DOOR GRILLE

Code	Description	Code	Description
NV200X200	NVDG to suit 200sq opening, c/w frame	NV300X150	NVDG to suit 300 x 150mm opening, c/w frame
NV300X300	NVDG to suit 300 x 300mm opening, c/w frame		



**GRILLE BOXES AND LOUVRES**

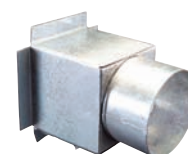
**FIXED BLADE LOUVRES**

Code	Description	Code	Description
FB150	150 x 150mm, satin anodised finish	FB200	200 x 200mm, satin anodised finish
FB250	250 x 250mm, satin anodised finish	FB400	400 x 400mm, satin anodised finish
FB300	300 x 300mm, satin anodised finish	FB500	500 x 500mm, satin anodised finish
FB350	350 x 350mm, satin anodised finish	FB600	600 x 600mm, satin anodised finish
FB450	450 x 450mm, satin anodised finish		
FB550	550 x 550mm, satin anodised finish		



**GRILLE BOXES**

Code	Description	Code	Description
GB100-T100	100 x 100mm top spigot, outlet 100mm	GB150-S100	150 x 150mm side entry, spigot 100mm
GB150-S150	150 x 150mm side outlet 150mm	GB150-T100	150 x 150mm top spigot, outlet 100mm
GB150/4-6"	150 x 150mm multi box tapped spigot in plastic, 95mm/145mm Dia		
GB150-S125	150 x 150mm side spigot outlet 125mm	GB200-S125	200 x 200mm with 125mm side entry spigot
GB200-S150	200 x 200mm with 150mm side entry spigot	GB200-T100	200 x 200mm with 100mm top entry spigot
GB200-T125	200 x 200mm with 125mm top entry spigot	GB200-T150	200 x 200mm with 150mm top entry spigot
GB225-T150	225 x 225mm with 150mm top entry spigot	GB225-T200	225 x 225mm with 200mm top outlet
GB250-T150	250 x 250mm with 150mm top entry spigot	GB250-T200	250 x 250mm with 200mm top entry spigot
GB300-S250	300 x 300mm with 250mm side entry spigot	GB300-T150	300 x 300mm with 150mm top entry spigot
GB300-T200	300 x 300mm with 200mm top entry spigot	GB300-T250	300 x 300mm with 250mm top entry spigot
GB350-T315	350 x 350mm with 315mm top entry spigot		
GB350/6-12"	350 x 350mm with tapered spigot 145mm/245mm/295mm Dia		
GB375/6-12"	375 x 375mm with tapered spigot 145mm/195mm/295mm Dia		
GB400-T250	400 x 400mm with 250mm top spigot entry	GB400-T315	400 x 400mm with 315mm top spigot entry
GB450-T250	450 x 450mm with 250mm top spigot entry	GB450-T300	450 x 450mm with 300mm top spigot entry
GB450-T350	450 x 450mm with 350mm top spigot entry		
GB450/8-14"	450 x 450mm with tapered spigot 195mm/295mm/350mm Dia		
GB450-T400	450 opening, 400mm top spigot outlet		
GB460/8-12"	465 x 465mm with tapered spigot 200mm/250mm/300mm Dia		
GB500/8-14"	500 x 500mm with tapered spigot 195mm/295mm/350mm Dia		
GB550-T315	550 x 550mm with 315mm top spigot outlet		
GB550/8-12"	550 x 550mm with tapered spigot 200mm/250mm/300mm Dia		
GB595-S200	595 x 595mm with 200mm side spigot	GB595-T300	595 x 595mm with 300mm top spigot



## CONTROLS & ANCILLARIES

### GRILLES AND DIFFUSERS

#### TECHNICAL INFORMATION

#### GRILLES AND DIFFUSERS

##### EXTRACT GRILLES FOR BATHROOMS & KITCHENS

Code	Description
CPKH	Extract grille for kitchens with humidity control



##### CEILING DIFFUSER (COMPLETE WITH DAMPER)

Code	Description	Code	Description
DF150DA	150mm dia. Ceiling diffuser, anodised	DF300DA	300mm dia. Ceiling diffuser, anodised
DF150DW	150mm dia. Ceiling diffuser, white	DF300DW	300mm dia. Ceiling diffuser, white
DF200DA	200mm dia. Ceiling diffuser, anodised	DF350DA	350mm dia. Ceiling diffuser, anodised
DF200DW	200mm dia. Ceiling diffuser, white	DF350DW	350mm dia. Ceiling diffuser, white
DF250DA	250mm dia. Ceiling diffuser, anodised		
DF250DW	250mm dia. Ceiling diffuser, white		



##### TEE-PIECE (MALE FITTING)

Code	Description	Code	Description
TP100X100	Male fitting, 100 x 100 x 100mm	TP125 x 125	Male fitting, 125 x 125 x 125mm
TP150X100	Male fitting, 150 x 150 x 100mm	TP150 x 150	Male fitting, 150 x 150 x 150mm
TP200X200	Male fitting, 200 x 200 x 250mm	TP150 x 150 x 100	Male fitting, 150 x 150 x 100mm
TP200X150	Male fitting, 200 x 150 x 200mm	TP315 x 150	Male fitting 315 x 315 x 150mm



##### AIR VALVES (STEEL)

Code	Description	Code	Description
V100S	100mm steel	V100S*	100mm steel
V125S	125mm steel	V125S*	125mm steel
V150S	150mm steel	V200S	200mm steel



##### EGGCRATE GRILLE SATIN ANODISED

Code	Description	Code	Description
EC1120	Square duct (1070mm sq neck, 1135mm sq outside)	EC645	Square duct (600mm sq neck, 660mm sq outside)
EC720	Square duct (677mm sq neck, 737mm sq outside)	EC820	Square duct (773mm sq neck 633mm sq outside)



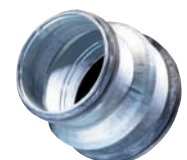
##### AIR VALVE (PLASTIC)

Code	Description	Code	Description
V100	100mm, c/w retaining ring	V125	125mm, c/w retaining ring
V150	150mm, c/w retaining ring	V200	200mm, c/w retaining ring



##### REDUCERS (MALE FITTING)

Code	Description	Code	Description
RED125X100	Male fitting 125 x 100mm	RED150 x 100	Male fitting 150 x 100mm
RED150X125	Male fitting 150 x 125mm	RED200 x 100	Male fitting 200 x 100mm
RED200X125	Male fitting 200 x 125mm	RED200 x 150	Male fitting 200 x 150mm
RED250X200	Male fitting 250 x 200mm	RED400 x 315	Male fitting 400 x 315mm
RED200X180	Male fitting 200 x 180mm		



DAMPERS

AIRE VALVE & FIRE DAMPER

Code	Description	Code	Description
V-FD100	Valve & damper 100mm dia	V-FD125	Valve & damper 125mm dia



CIRCULAR VOLUME CONTROL DAMPER

Code	Description	Code	Description
CD100D	Volume control damper c/w 100mm circular spigot	CD200D	Volume control damper c/w 200mm circular spigot
CD125D	Volume control damper c/w 125mm circular spigot	CD250D	Volume control damper c/w 250mm circular spigot
CD150D	Volume control damper c/w 150mm circular spigot		



CIRCULAR FIRE DAMPER

Code	Description	Code	Description
CFD-100	100mm dia fire damper	CFD-125	125mm dia fire damper



RECTANGULAR VOLUME CONTROL DAMPER

Code	Description	Code	Description
CD200 x 200	Flanged for duct size 200 x 200mm	CD400 x 400	Flanged for duct size 400 x 400mm



GENERAL PURPOSE SQUARE FIRE DAMPER (LESS FRAME)

Code	Description	Code	Description
FDBG200	Duct size 200 x 200mm	FDBG250	Duct size 250 x 250mm
FDBG300	Duct size 300 x 300mm	FDBG350	Duct size 350 x 350mm
FDBG450	Duct size 450 x 450mm		



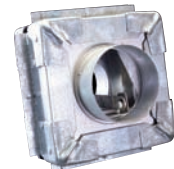
GENERAL PURPOSE SQUARE FIRE DAMPER WITH FRAME

Code	Description	Code	Description
FDBG200W	C/w wall frame, duct size 200 x 200mm	FDBG350W	C/w wall frame, duct size 350 x 350mm
FDBG400W	C/w wall frame, duct size 400 x 400mm		



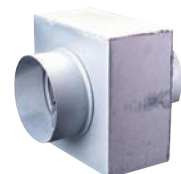
GENERAL PURPOSE CIRCULAR FIRE DAMPERS WITH FRAME

Code	Description	Code	Description
FDCG150W	C/w wall frame, 150mm dia	FDCG200W	C/w wall frame, 200mm dia
FDCG250W	C/w wall frame, 250mm dia	FDCG300W	C/w wall frame, 300mm dia
FDCG315W	C/w wall frame, 315mm dia	FDCG400W	C/w wall frame, 400mm dia



GENERAL PURPOSE CIRCULAR FIRE DAMPERS WITHOUT FRAME

Code	Description	Code	Description
FDCG100	BSB damper type 100mm dia	FDCG150	BSB damper type 150mm dia
FDCG200	BSB damper type 200mm dia		



OPPOSED BLADE DAMPER

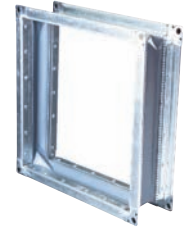
Code	Description	Code	Description
OB150	OB damper 150 x 150mm	OB200	OB damper 200 x 200mm



SILENCERS AND CONNECTORS

FLEXIBLE CONNECTOR WITH RECTANGULAR SPIGOT

Code	Description	Code	Description
FXRC1	Spigot 152 x 76mm	FXRC2	Spigot 150 x 100mm
FXRC3	Spigot 200 x 150mm	FXRC4	Spigot 229 x 127mm
FXRC5	Spigot 305 x 152mm	FXRC6	Spigot 400 x 150mm
FXRC7	Spigot 457 x 229mm	FXRC8	Spigot 500 x 300mm
FXRC9	Spigot 762 x 304mm	FXRC10	Spigot 889 x 381mm
FXRC11	Spigot 1200 x 700mm		
FXSQ509	Spigot 509 x 509mm	FXSQ573	Spigot 573 x 573mm



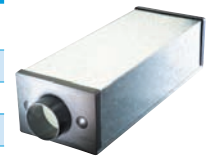
FAST CLAMPS

Code	Description	Code	Description
FC-100	To suit 100m dia spigot	FC-125	To suit 125m dia spigot
FC-150	To suit 150m dia spigot	FC-200	To suit 200m dia spigot
FC-250	To suit 250m dia spigot	FC-315	To suit 315m dia spigot
FC-400	To suit 400m dia spigot	FC-500	To suit 500m dia spigot



INLINE SILENCERS

Code	Description	Code	Description
SIL-100	600mm long c/w 100mm duct connection	SIL-125	600mm long c/w 125mm duct connection
SIL-150	600mm long c/w 150 duct connection	SIL-200	600mm long c/w 200mm duct connection
SIL-250	600mm long c/w 250mm duct connection	SIL-315	600mm long c/w 315mm duct connection
SIL-400	900mm long c/w 400mm duct connection		



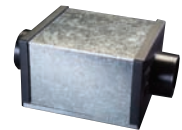
CIRCULAR FLEXIBLE CONNECTOR

Code	Description	Code	Description
CFC12	Width 125mm x 127mm dia x 159mm	CFC31	Width 315mm x 317mm dia x 284mm
CFC16	Width 150mm x 152mm dia x 159mm	CFC40	Width 400mm x 402mm dia x 349mm
CFC20	Width 200mm x 202mm dia x 184mm	CFC50	Width 500mm x 502mm dia x 475mm
CFC25	Width 250mm x 252mm dia x 234mm		



FILTER CASSETTE

Code	Description	Code	Description
SF-100	100m dia Spigot	SF-200	200m dia Spigot
SF-125	125m dia Spigot	SF-250	250m dia Spigot
SF-150	150m dia Spigot	SF-315	315m dia Spigot



DUCT HEATERS & HEAT EXCHANGERS

ELECTRIC DUCT HEATER

Code	Description	Code	Description
SH-125	(1.0KW), 125mm dia, c/w external reset	SH-150	(1.5KW), 150mm dia, c/w external reset
SH-200	(2.0KW), 200mm dia, c/w external reset	SH-250	(3.0KW), 250mm dia, c/w external reset
SH-315	(4.5KW) 315mm dia, c/w external reset	SH-400	(9KW), 400mm dia, c/w external reset



HEAT EXCHANGERS

Code	Description	Code	Description
HX125	125mm dia spigot	HX150	150mm dia spigot
HX200	200mm dia spigot	HX250	250mm dia spigot
HX315	315mm dia spigot		



**COWLS AND SHUTTERS**

**TERMINATOR GRP ROOF COWL (BACK/DRAFT SHUTTER, BIRD AND HAND GUARDS)**



Code	Description	Code	Description
TRTS-A	Roof cowl 900 x 620 x 340mm, weight 16.3kg	TRTS-B	Roof cowl 1080 x 740 x 375mm, weight 20.7kg
TRTS-C	Roof cowl 1320 x 964 x 475mm, weight 34.4kg	TRTS-D	Roof cowl 1470 x 1076 x 490mm, weight 39.2kg
TRTS-E	Roof cowl 1780 x 1170 x 485mm, weight 68.8kg	TRTS-F	Roof cowl 2260 x 1476 x 600mm, weight 114kg

**GRP ROOF COWL (WITH SUPPLY/EXTRACT CHAMBER WITH BIRD GUARD)**



Code	Description	Code	Description
TRSE1	Supply/extract cowl 900 x 620 x 340mm, weight 21.3kg	TRSE2	Supply/extract cowl 900 x 620 x 340mm, weight 21.3kg
TRSE3	Supply/extract cowl 900 x 620 x 340mm, weight 31.3kg	TRSE4	Supply/extract cowl 1320 x 964 x 475mm, weight 41.4kg
TRSE5	Supply/extract cowl 1320 x 964 x 475mm, weight 41.4kg	TRSE6	Supply/extract cowl 1320 x 964 x 475mm, weight 41.4kg
TRSE7	Supply/extract cowl 1780 x 1170 x 489mm, weight 76.8kg		

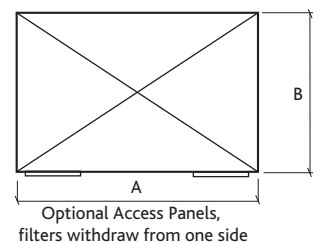
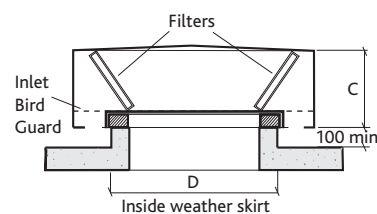
**SUPPLY TERMINALS**

Low profile terminals are to be supplied by Nuair. The terminal is to be rectangular, constructed in aluminium alloy and with non-rusting fixings. Twin inlets fitted with inlet/bird guards and an integral weather skirt. Filtered units are to be fitted with filter frames for removal and replacement of BS2831 and BS2963 filters.

Typical code: 630LPDT/1 - Disposable Filter. 630LPWT/1 - Washable Filter.

Code	Size	A	B	C	D	Weight with filter	Disposable	Washable
630LP*T/1	630	1350	700	280	690	15.1	67	106
800LP*T/1	800	1390	800	350	790	25.2	51	88
1000LP*T/1	1000	1820	1050	420	1040	32.5	18	28
1120LP*T/1	1120	2070	1150	500	1140	41.1	17	35
1400LP*T/1	1400	2620	1800	600	1440	91.0	3.3	6.5

Note:\* D = Disposable \* W= Washable



**SUPPLY & EXTRACT TERMINALS**

Low profile terminals are to be supplied by Nuair. The terminal is to be rectangular, constructed in aluminium alloy and with non-rusting fixings. Twin inlets fitted with inlet/bird guards and an integral weather skirt.

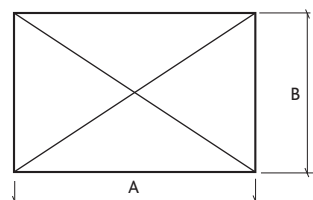
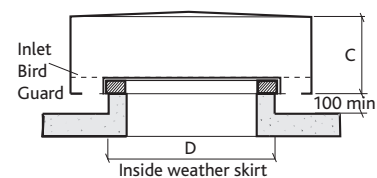
Typical code: 315LPT/1

Note: Air Pressure Drop of Attenuator (Pa) = Z x Q<sup>2</sup>

where: Z = Factor listed in table below Q = Air Volume Flow Rate (m<sup>3</sup>/s)

Code	Size	A	B	C	D	Weight	Z Extract	Z Intake
315LPT/1	315	615	400	150	390	3.5	553	614
400LPT/1	400	745	500	165	490	5.8	222	296
500LPT/1	500	915	600	200	590	8.1	105	117
630LPT/1	630	1350	700	280	690	12.6	48	29
800LPT/1	800	1390	800	350	790	23.5	32	21
1000LPT/1	1000	1820	1050	420	1040	29.8	13	10
1120LPT/1	1120	2070	1150	500	1140	35.0	6.5	4.6
1250LPT/1	1250	2204	1250	540	1240	41.0	5	4
1400LPT/1	1400	2620	1800	600	1440	65.0	1	1

Note:\* D = Disposable \* W= Washable





## CONTROLS & ANCILLARIES

### COWLS & SHUTTERS

#### TECHNICAL INFORMATION

#### COWLS AND SHUTTERS

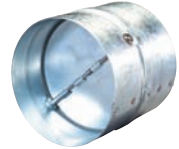
##### ROOF & WALL COWLS

Code	Description	Code	Description
4RC	Grey roof cowl 100mm	4WC	Grey wall cowl 100mm



##### BACKDRAFT SHUTTERS (STEEL)

Code	Description	Code	Description
BD100D	100mm dia steel shutter	BD125D	125mm dia steel shutter
BD150D	150mm dia steel shutter	BD200D	200mm dia steel shutter
BD250D	250mm dia steel shutter	BD315D	315mm dia steel shutter



##### ROOF CURBS (GALVANISED STEEL PURLIN BOX)

Code	Description
PBC-A	C/w curb/purlin box and sealing strip to upper face 550 x 550 x 250mm
PBC-B	C/w curb/purlin box and sealing strip to upper face 650 x 650 x 250mm
PBC-C	C/w curb/purlin box and sealing strip to upper face 900 x 900 x 250mm
PBC-D	C/w curb/purlin box and sealing strip to upper face 1000 x 1000 x 250mm
PBC-E	C/w curb/purlin box and sealing strip to upper face 1100 x 1100 x 250mm
PBC-F	C/w curb/purlin box and sealing strip to upper face 1400 x 1400 x 250mm



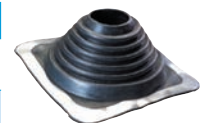
##### ROOF PIPE COWLS

Code	Description	Code	Description
RPC-4	Roof pipe cowl, 100mm dia	RPC-5	Roof pipe cowl, 125mm dia
RPC-6	Roof pipe cowl, 150mm dia	RPC-7	Roof pipe cowl, 160mm dia
RPC-8	Roof pipe cowl, 200mm dia	RPC-9	Roof pipe cowl, 224mm dia
RPC-10	Roof pipe cowl, 250mm dia	RPC-11	Roof pipe cowl, 280mm dia
RPC-12	Roof pipe cowl, 315mm dia	RPC-13	Roof pipe cowl, 300mm dia
RPC-14	Roof pipe cowl, 355mm dia	RPC-16	Roof pipe cowl, 400mm dia



##### ROOF PIPE FLASHING

Code	Description	Code	Description
RPF10-18	Roof pipe flashing 200-450mm	RPF3-6	Roof pipe flashing 75-150mm
RPF4-7	Roof pipe flashing 100-175mm	RPF6-11	Roof pipe flashing 150-275mm
RPFK	Roof pipe flashing fixing kit		



#### AV MOUNTS

##### ANTI-VIBRATION MOUNTINGS (SET OF FOUR)

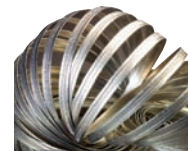
Code	Description	Code	Description
NAV1	Rubber mounting, max weight 20kg	NAV2	Rubber mounting, max weight 80kg
NAV3	Rubber mounting, max weight 180kg	NAV4	Rubber mounting, max weight 260kg
NAV5	Rubber mounting, max weight 130kg	NAV6	Rubber mounting, max weight 320kg
NAV49	Spring mounting, max weight 400kg	NAV50	Spring mounting, max weight 480kg
NAV51	Spring mounting, max weight 520kg	NAV52	Spring mounting, max weight 600kg
NAV53	Spring mounting, max weight 700kg	NAV54	Spring mounting, max weight 800kg
NAV55	Spring mounting, max weight 950kg	NAV56	Spring mounting, max weight 1110kg
NAV57	Spring mounting, max weight 1270kg	NAV58	Spring mounting, max weight 1430kg



**DUCTING & ACCESS DOORS**

**STRANGLE BAND FIXINGS**

Code	Description	Code	Description
SB1	Strip 11mm x 30m	SB2	Fittings, 100 per box



**SEMI RIGID DUCTING**

Code	Description	Code	Description
SRD100	100mm dia, 3m length	SRD125	125mm dia, 3m length
SRD150	150mm dia, 3m length	SRD160	160mm dia, 3m length
SRD200	200mm dia, 3m length	SRD250	250mm dia, 3m length
SRD315	315mm dia, 3m length	SRD350	350mm dia, 3m length
SRD400	400mm dia, 3m length	SRD450	450mm dia, 4m length
SRD500	500mm dia, 4m length		



**RIGID DUCT CONNECTOR**

Code	Description	Code	Description
RDC100	100mm dia galvanised finish	RDC125	125mm dia galvanised finish
RDC150	150mm dia galvanised finish	RDC200	200mm dia galvanised finish



**ZIP TIE**

Code	Description
DT33	Dynote 200mm dia (Sold Individually)



**FLEXIBLE DUCTING**

Code	Description	Code	Description
FLD100	100mm dia x 5m	FLD125	125mm dia x 5m
FLD150	150mm dia x 5m	FLD200	200mm dia x 5m
FLD250	250mm dia x 5m	FLD300	300mm dia x 5m
FLD315	315mm dia x 5m	FLD350	350mm dia x 5m
FLD400	400mm dia x 5m	PVC481WH	Flexible duct connector 121 x 60mm
PVC433WH	Flexible ducting 121mm x 60mm x 3m length		



**FLEXIBLE DUCTING (INSULATED)**

Code	Description	Code	Description
FLDI100	100mm dia, x 5m length	FLDI125	125mm dia, x 5m length
FLDI150	150mm dia, x 5m length	FLDI200	200mm dia, x 5m length
FLDI250	250mm dia, x 5m length		



## CONTROLS & ANCILLARIES

### DUCTING

#### TECHNICAL INFORMATION

#### DUCTING

##### BACKDRAFT SHUTTER

Code	Description	Code	Description
PVC494WH	100mm ID pipe, in white	PVC694WH	150mm ID pipe, in white
PVC594WH	125mm ID pipe, in white		



##### WALL OUTLET WITH GRAVITY FLAPS 125MM DIA CONNECTION

Code	Description	Code	Description
PVC506BR	RAL 8017 in brown	PVC506WH	RAL 9010 in white



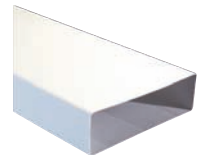
##### TELESCOPIC OUTLET

Code	Description	Code	Description
PVC508BR	In brown duct dia 125mm	PVC508COT	In beige duct dia 125mm
PVC508WH	RAL 9010, in white duct dia 125mm		



##### FLAT DUCTING CHANNEL

Code	Description	Code	Description
PVC510WH	1m, in white 204 x 60mm	PVC515WH	1.5m, in white 204 x 60mm
PVC010WH	1m in white 110 x 54mm	PVC015WH	1.5m, in white 110 x 54mm on item enquiry



##### FLAT CHANNEL CONNECTOR

Code	Description	Code	Description
PVC520WH	Flat channel connector in white		



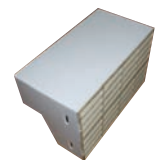
##### LOURVED GRILLES

Code	Description	Code	Description
PVC604BR	With flyscreen, in brown	PVC604COT	With flyscreen, in beige
PVC604WH	With flyscreen, in white	PVC5904WH	RAL9010, in white with flyscreen



##### DOUBLE AIRBRICK (204MM X 60MM CONNECTIONS)

Code	Description	Code	Description
PVC904WH	White	PVC904BR	Brown
PVC904COT	Beige	PVC904TC	Terracotta



##### WALL KIT

Code	Description	Code	Description
PVCWALL/1	Pipe, shutter and outlet in white	PVCWALL/1BR	Pipe, shutter and outlet in brown



For other colours contact Nuair.

DUCTING

WALL KIT

Code	Description	Code	Description
PVCWALL/3	Telescopic pipe, shutter, cowled outlet and damper in white	PVCWALL/3BR	Telescopic pipe, shutter, cowled outlet and damper in brown

For other colours contact Nuair.



WALL KIT

Code	Description
PVCWALL/4	Telescopic pipe, cowled outlet and fittings



WALL KIT

Code	Description
PVCWALL/5	Wall installation kit, airbrick, adaptor, channel and 100mm dia spigot

For other colours contact Nuair.

WALL KIT (100MM DIA)

Code	Description	Code	Description
PVCWALL/6	Telescopic pipe, louvered outlet (low resistance) in white	PVCWALL/6BR	Telescopic pipe, louvered outlet (low resistance) in brown
PVCWALL/6COT	Telescopic pipe, louvered outlet (low resistance) in cotswold		
PVCWALL/6TC	Telescopic pipe, louvered outlet (low resistance) in terracotta		

