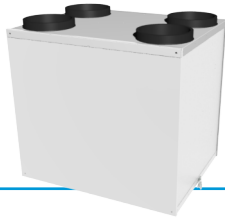


# MRXBOX-SIL4

## Four Way Silencer

For use in conjunction with MRXBOXAB-ECO4 Units

### Installation and Maintenance



### 1.0 Introduction

Nuaire's MRXBOX-SIL4 (Silencer) is designed for use with MRXBOXAB-ECO4 MVHR units. The product offers a four way attenuation solution to improve in duct noise levels; the bespoke solution allows both elements to be close coupled reducing breakout noise in this area and a more aesthetically pleasing installation.

### 2.0 General Installation

**Installation must be carried out by competent personnel in accordance with the appropriate authority and conforming to all statutory governing regulations.**

Please note a clear working space is required around the installed MVHR unit to allow the cover to be removed and provide sufficient access for maintenance such as filter change. Please allow a minimum of 480mm in front of the unit.

The fan must be installed indoors, on a suitable wall away from direct sources of frost, heat, water spray or moisture generation.

For a vibration-free result the unit must be mounted to a solid wall.

**When fitting a MRXBOX-SIL4 in conjunction with a MRXBOXAB-ECO4 the unit should be mounted using the alternative wall mounting method supplied under product code MRXBOX-AV4 (fig.5). Under no circumstances should this assembly be fitted using the standard hanging bracket supplied with the MVHR unit as this is not rated for the combined load.**

For more detailed information on structural and installation requirements of the MRXBOX(AB)-ECO4 unit please refer to the installation documents supplied with the MVHR unit and also MRXBOX-AV4 for wall mounting details.

#### 2.1 Pre-assembly

The silencer is supplied with 4x 200mm O-rings, these should be fitted over the 200mm foam spigots on the top of the MVHR unit.

Secure the toggle clamp and catch plate to both sides of the MVHR unit and silencer with the M4 fixings supplied (fig. 1).

If any Ecosmart products are to be used the connection to the MVHR unit should be made at this point as this is situated on the rear panel and access will be restricted once in place.

#### 2.2 Wall Mounting

Fit the wall mounting brackets and secure the MVHR unit using the anti-vibration mounts as detailed in the installation document supplied as part of MRXBOX-AV4.

MRXBOX-SIL4 can be placed on top of the MVHR unit with the spigots located inside the chambers of the SIL and secured in place using the toggle clamps, the safety pins supplied should be fitted to fasten the clamps in place in the locked position (fig. 1).

If space constraints prohibit the silencer being moved into position as a secondary operation it may be hung in advance using the additional wall bracket supplied with the MVHR, it can then be lifted off and lowered into position. Care should be taken to fix the bracket at a suitable height to ensure the two halves are not in contact when the final assembly is complete.

**Note: the above method is the preferred installation arrangement, a minimum gap of 75mm either side of the unit is advised to allow access to the toggle clamps.**

If space constraints do not allow this, the toggle clamps can be replaced with the metal fixing plates provided (see fig. 2). The MRXBOXAB-ECO4 + MRXBOX-SIL4 will need to be secured together and lifted as one assembly using suitable lifting equipment.

Figure 1. Toggle Clamp

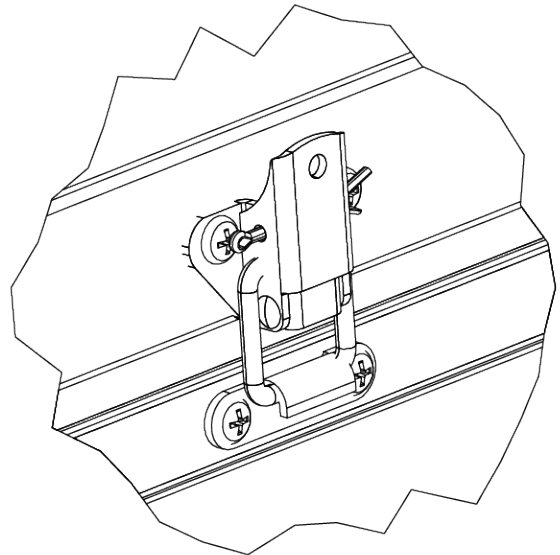
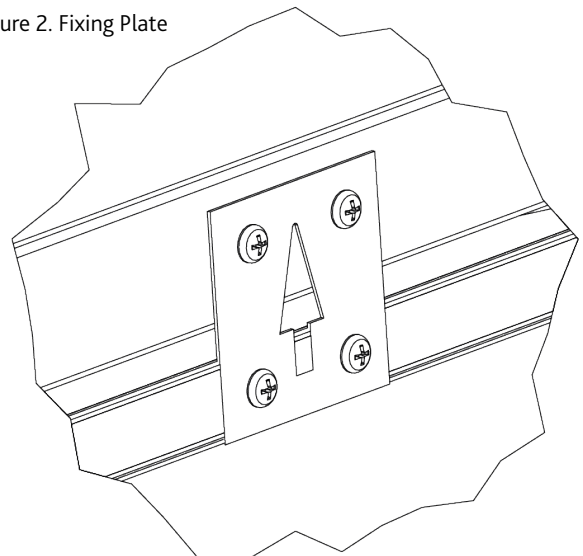


Figure 2. Fixing Plate



### 3.0 Dimensions

Figure 3. Front View of MRXBOXAB-SIL4

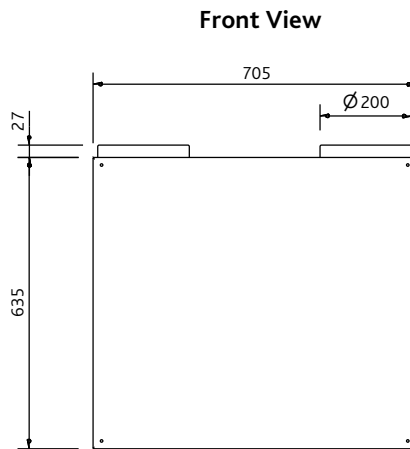


Figure 4. Side View of MRXBOXAB-SIL4

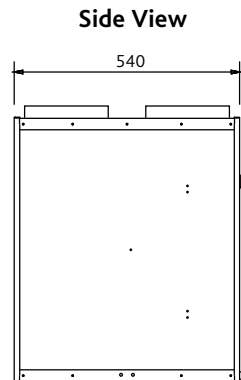
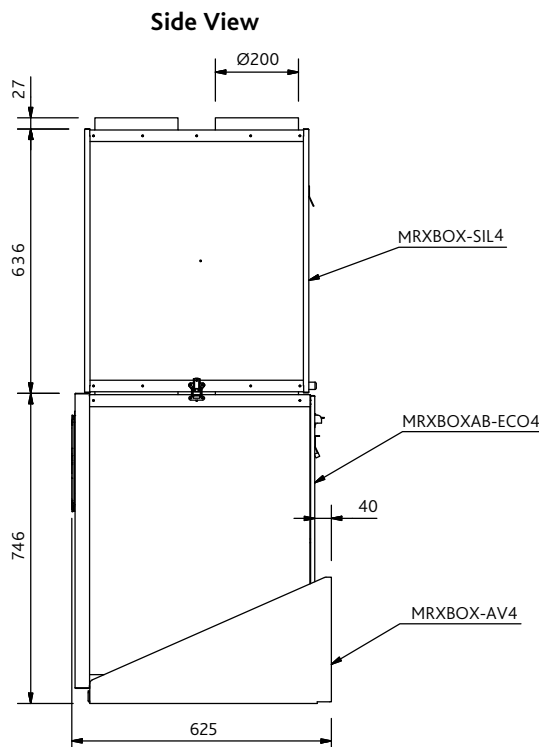


Figure 5. Installed view of MRXBOX-ECO4 using anti-vibration mounts (MRXBOX-AV4) and four way silencer (MRXBOX-SIL4)



### 4.0 Replacement of Parts

Should any component need replacing, Nuaire keep extensive stocks for quick delivery. Ensure that the unit is electrically isolated before carrying out any work. When ordering spare parts, please quote the serial number of the unit and the ARC number of the purchase, if possible.

**This information will be available on the fan label.**

#### **IMPORTANT**

**Ensure that the unit is electrically isolated, before carrying out any work.**

### 5.0 Warranty

The 5 year warranty starts from the day of delivery and includes parts and labour for the first year and parts only for the remaining 4 years.

This warranty is void if the equipment is modified without authorisation, is incorrectly applied, misused, disassembled, or not installed, commissioned and maintained in accordance with the details contained in this manual and general good practice.

The product warranty applies to the UK mainland and in accordance with Clause 14 of our Conditions of Sale. Customers purchasing from outside of the UK should contact Nuaire International Sales office for further details.

### 6.0 After Sales

For technical assistance or further product information, including spare parts and replacement components, please contact the After Sales Department.

**Telephone 02920 858 400**  
**[aftersales@nuaire.co.uk](mailto:aftersales@nuaire.co.uk)**

Technical or commercial considerations may, from time to time, make it necessary to alter the design, performance and dimensions of equipment and the right is reserved to make such changes without prior notice.