

779110 COOKERXBOX

Whole Home Ventilation Unit

Air Balancing Plate

Installation and Maintenance

1.0 Introduction

Nuaire's COOKERXBOX units are designed to provide whole home ventilation with heat exchange heat recovery.

A typical installation could be in the kitchen area, providing the most effective extract performance and taking advantage of the recoverable heat from cooking etc. In addition subsidiary extract from a bathroom or utility rooms (wet room) can be configured.

If the subsidiary extracts are required an air balancing plate (Fig 3) must be fitted to restrict the airflow from the kitchen in order to extract air from the additional wet rooms.

2.0 Installation

Figure 1. Remove the filters from the bottom of unit by pulling the filter catch and sliding out.

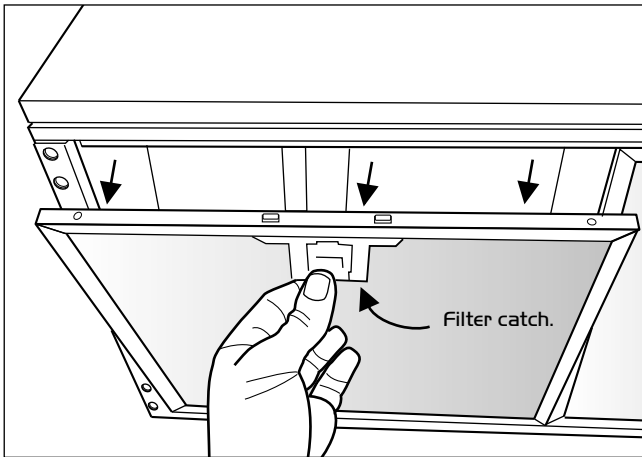


Figure 2. Remove the screws highlighted.

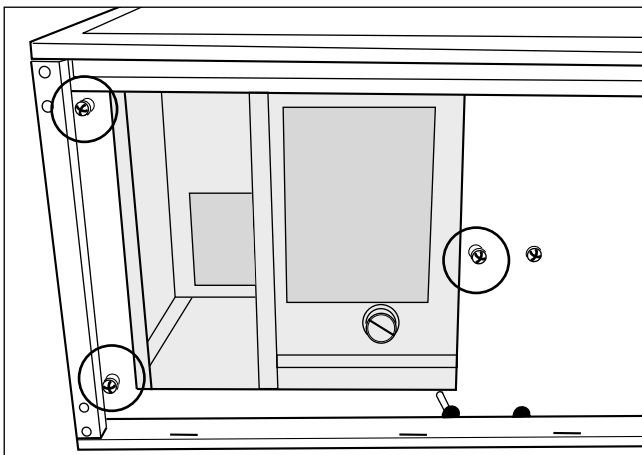


Figure 3. Fit the air balancing plate using the screws previously removed.

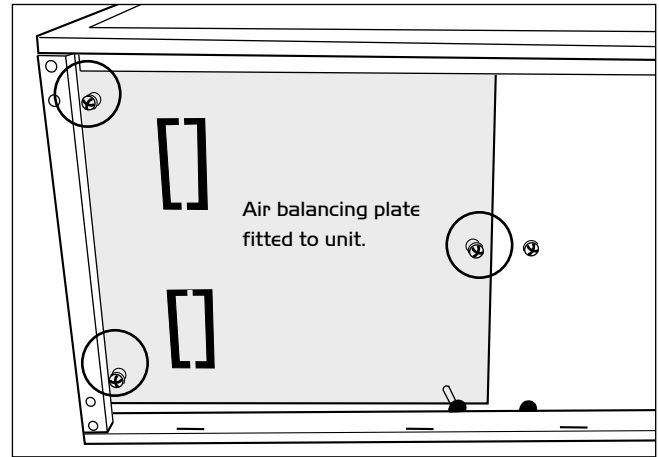


Figure 4. Adjust the damper blades on the air balancing plate to achieve the required air flow duties.

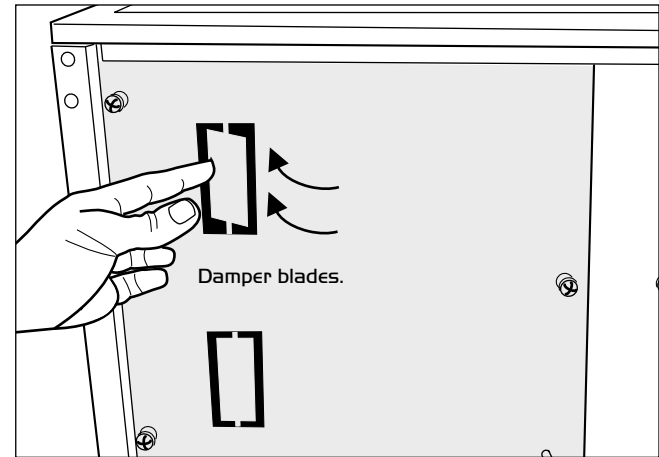


Figure 5. Replace the filters on the bottom of the unit.

