

Fitting Remote Controller XS-MFC or Remote Sensors (optional)

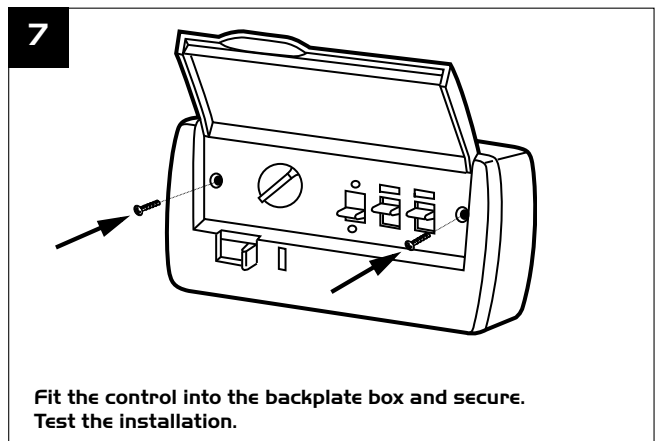
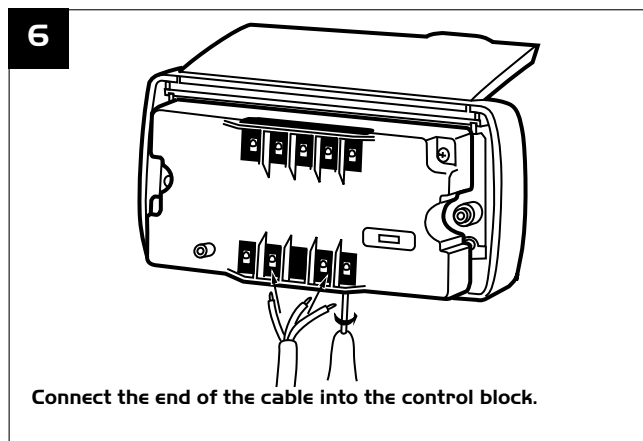
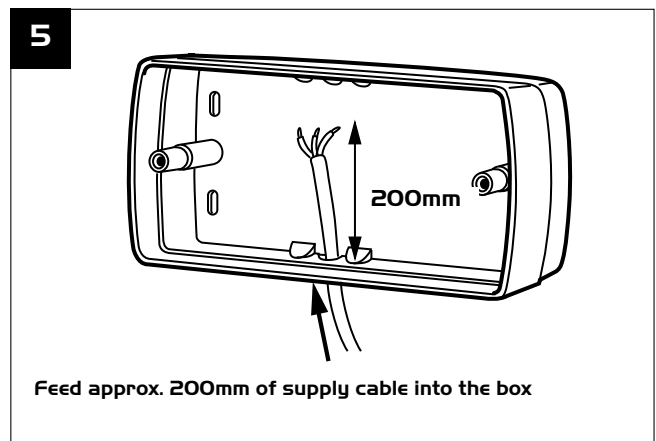
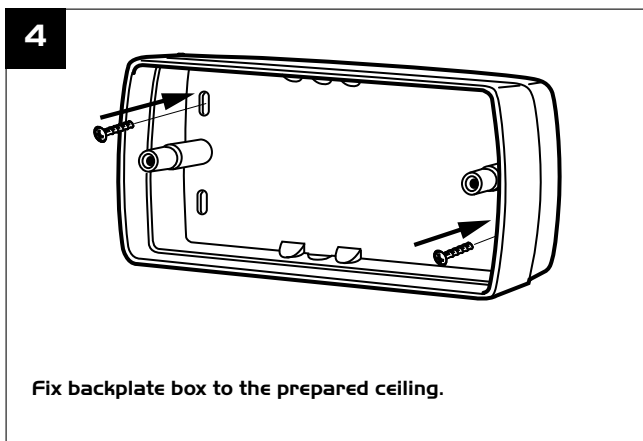
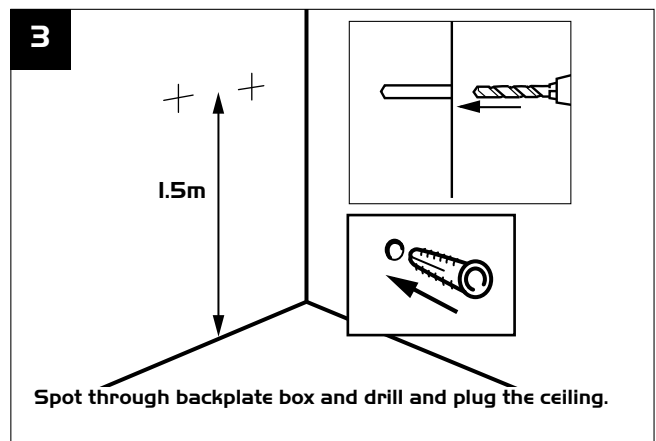
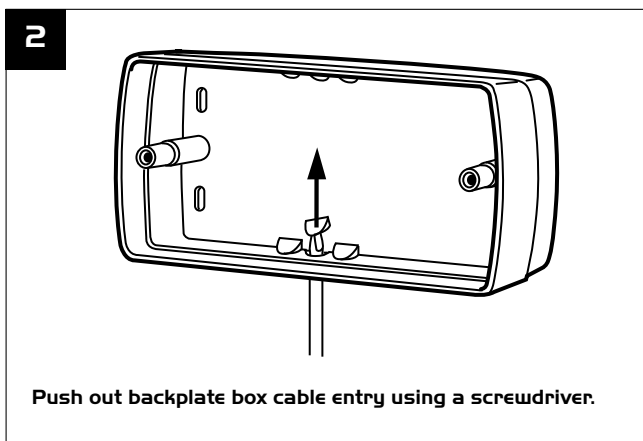
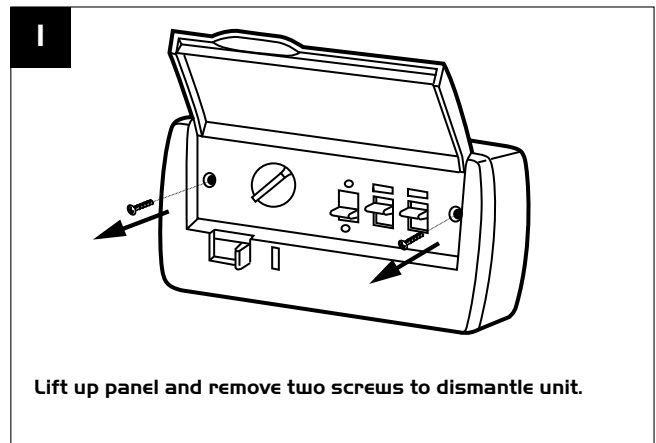
The XS-MFC Multi Fan Control provides supply or extract, variable speed and automatic or manual switching of several fans if desired, (see note below).

The control is best mounted approx 1.5m above the floor.

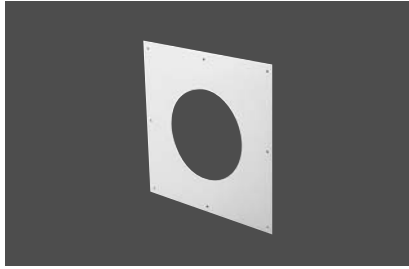
Remote Sensors are available for Humidity, Air Quality and Passive Infra Red control.

Remote Sensors should be positioned at least 1.5m above the floor and away from direct heat sources e.g. radiators.

Note: Up to 5 fans (size 6 / 9 inch) can be controlled by one XS-MFC. Up to 2 fans (size 12 inch) can be controlled by one XS-MFC. Do not mix different fan sizes on the same controller.

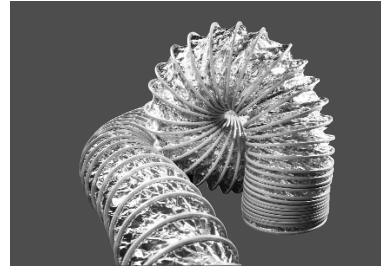


Ancillaries



Wall Fixing Plate

The Wall Fixing Plate is used for thin wall and above ceiling applications, to support the Fan assembly.



Flexible Ducting and Installation Accessories

A full range of ducting and installation accessories is available from Nuairé. Call Nuairé on 02920 885231 to request literature.

Maintenance

Periodically, at least once a year, or more frequently in case of heavy use, remove the dirt and encrustation from the grille(s) fan impeller and motor casing. Ensure the impeller is not cracked or deformed and is able to rotate freely and without oscillation. **Do not use any solvents to clean this product.**

Replacement of Parts

As a manufacturer Nuairé is aware that time is important. In the event of a breakdown of this equipment, it should be adequately packaged and returned to Nuairé.

IMPORTANT!

Please telephone Nuairé before posting your unit. We will give you a returns number to identify your package.

We will endeavour to repair or replace it within five working days of receipt. See our warranty terms.

Warranty

The 3 year warranty starts from the day of delivery and includes parts and labour for the first year. The remaining period covers replacement parts only.

This warranty is void if the equipment is modified without authorisation, is incorrectly applied, misused, disassembled, or not installed, commissioned and maintained in accordance with the details contained in this manual and general good practice.

Terms

This warranty applies to units installed and used in the United Kingdom.

The equipment will be repaired or replaced at Nuairé's cost provided that the appliance:

1. Has been installed and used in accordance with the fitting and wiring instructions supplied with each unit.
2. Has not been connected to an unsuitable electrical supply. (The correct supply voltage is shown on the appliance rating label attached to the unit).
3. Has not been modified or repaired by persons not authorised by Nuairé.
4. A unit returned to Nuairé should be suitably protectively packaged and clearly marked with the 'returns number' obtained from Nuairé prior to posting.

Service Enquiries

Nuairé can assist you in all aspects of service. Our service department will be happy to provide any assistance required, initially by telephone and if necessary arrange for an engineer to call within 48 hours if possible.

Telephone 029 2085 8585
Fax 029 2085 8586

Technical or commercial considerations may, from time to time, make it necessary to alter the design, performance and dimensions of equipment and the right is reserved to make such changes without prior notice.