

SmarTwin ST-BMS Interface

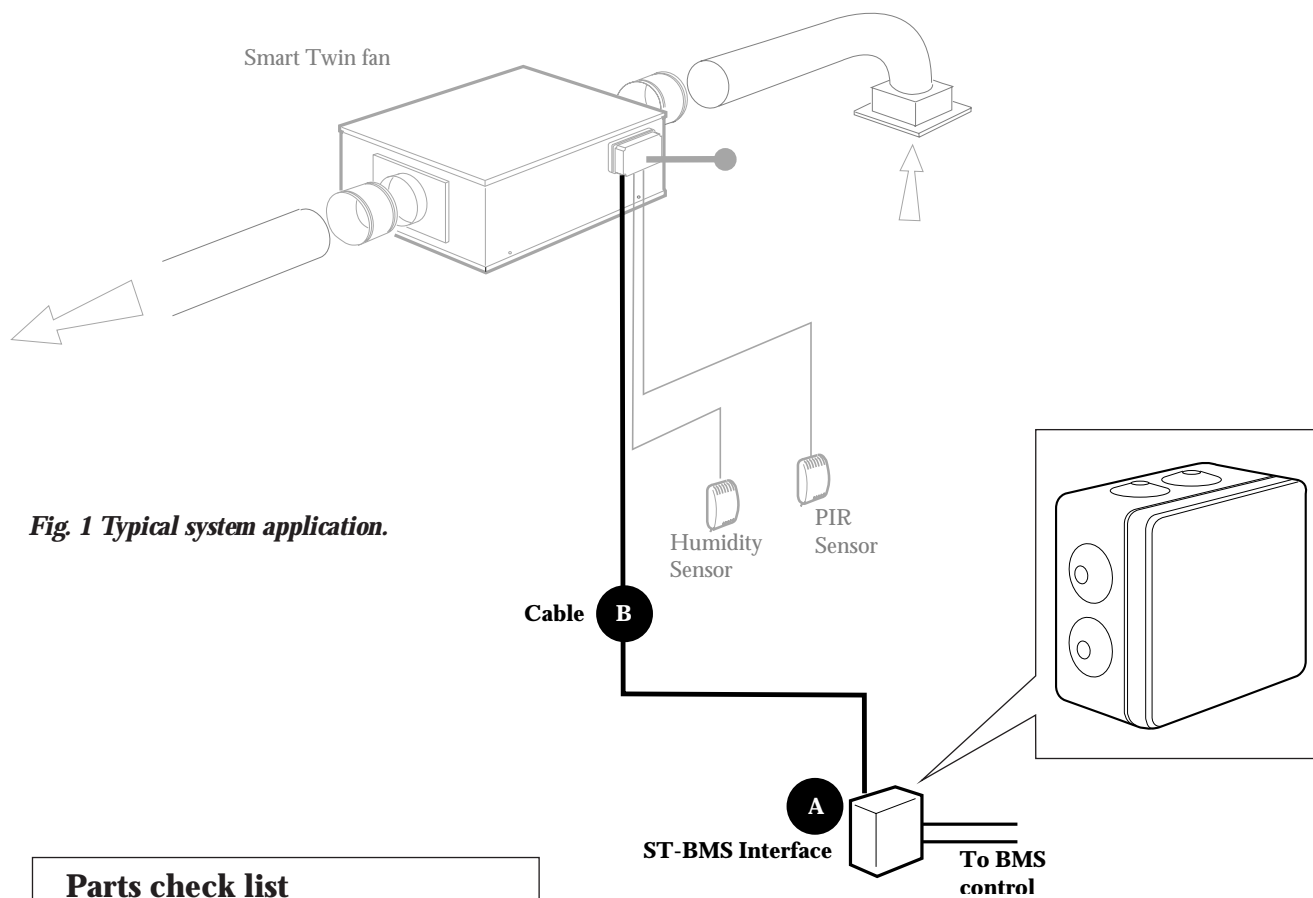


Fig. 1 Typical system application.

Parts check list

- A** ST-BMS Interface
- B** 1 off 10 metre length of plugged SELV cable

ST-BMS BMS Interface

Designed to be used with the SmarTwin range of supply and extract fans the BMS interface is supplied with a pre-plugged 10m length of communications cable. This cable is used to connect the interface to the Smart Twinfan module.

The interface operates on Safe Extra Low Voltage and is powered from the fan control module.

This Interface will link the system to a BMS which would then act as a switch to enable or disable the Smart Twinfan ventilation system.

Fan Fail Indication

The interface also has a volt free connection to provide a fan fail signal for the BMS when appropriate.

Communications cable

A 10m length of Safe Extra Low Voltage communications cable (SELV) is supplied with the Interface.

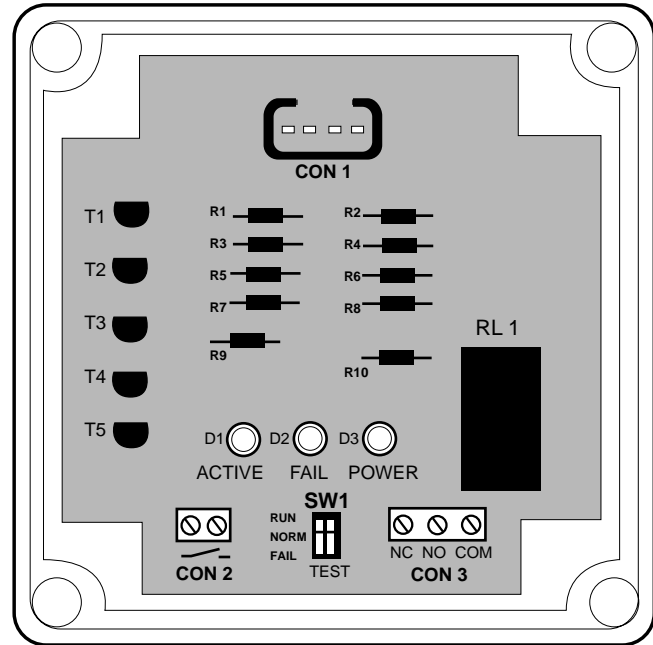
Ancillaries

BMS Interface (ST-BMS)

Installing the Interface

The interface is supplied complete with 10 metres of connecting cable with plugs attached.

- Fix one end of the 10m cable to the Smart Twin fans control connection box (connection socket marked INPUT 1).
- Select a suitable location for the interface and arrange the cable in position. Fix the casing into its chosen position.
- Feed the plug at the other end of the 10m cable carefully through the gland on the side of the interface casing and insert the plug into the socket marked CON 1.
- Connect the BMS system to the interface volt free connection marked CON 2 which will then accept a BMS on/off signal to enable or disable the Smart Twinfan system.
- If desired, a volt free connection is provided to send a fail signal to the BMS when appropriate. The polarity of the fail signal can be reversed by moving the normally closed (NC) connection to the normally open (NO) connection on the terminals marked CON 3.



Internal view of ST-BMS Interface

Operation of the Interface

The interface has a test switch marked SW1. In normal operation the switch should be set at NORM position. However, the switch can be set to RUN or FAIL to test these functions of the unit before the BMS is installed.

There are three status LED's provided on the interface.

- YELLOW:** This LED will be illuminated when power is connected to the ST-BMS interface.
- RED:** This LED will be illuminated when the SmartTwinfan is in a fail condition.
- GREEN:** This LED will be illuminated when the enable signal is detected from the BMS

Technical or commercial considerations may, from time to time, make it necessary to alter the design, performance and dimensions of equipment and the right is reserved to make such changes without prior notice.

NUAIRE

**Western Industrial Estate,
Caerphilly, Mid Glam CF83 1XH
United Kingdom.**

Telephone: 01222 885911

Facsimile: 01222 887033,

Email: info@nuaire.co.uk

Leaflet No. 670897