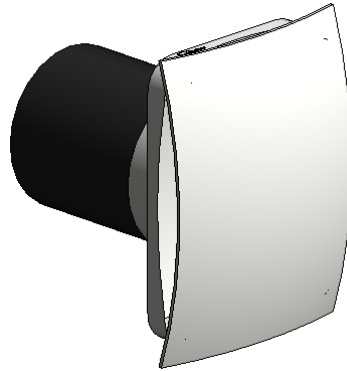
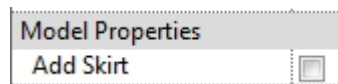


nuaire dMEV Revit Model Features

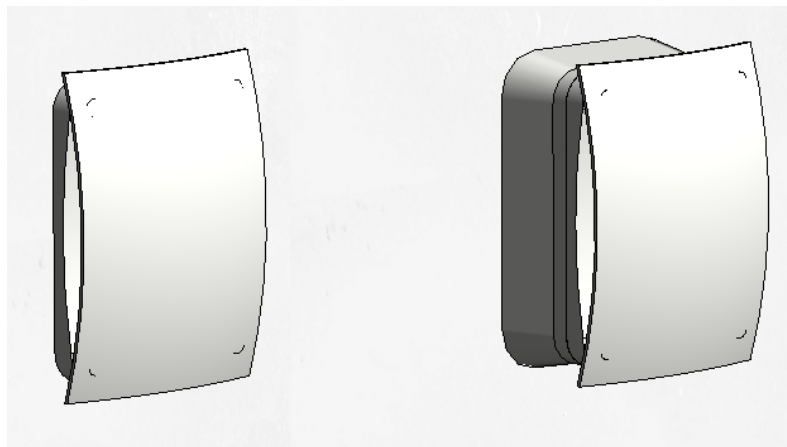
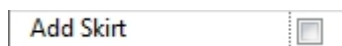
1. The model uses a type catalogue so all variants of the dMEV extract fan range can be inserted using the same .rfa file (see Read Me file attached for further info)



The dMEV.rfa model attached includes the following option in the Model Properties Category in the Properties Window



2. 'Add Skirt' allows you to show or hide the additional skirt spacer supplied with the fan.



3. If the model is inserted into the project without using the correct procedure then you will be alerted via a red box and 'DO NOT USE' wording around the model. The model code will also show this same message in the schedules. Please then refer to the additional 'Please read Me File' packaged with this family for the correct insertion procedure.

